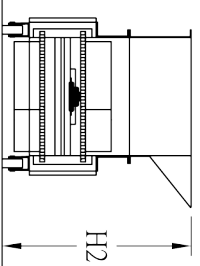
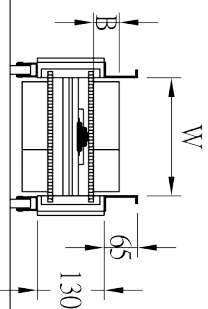
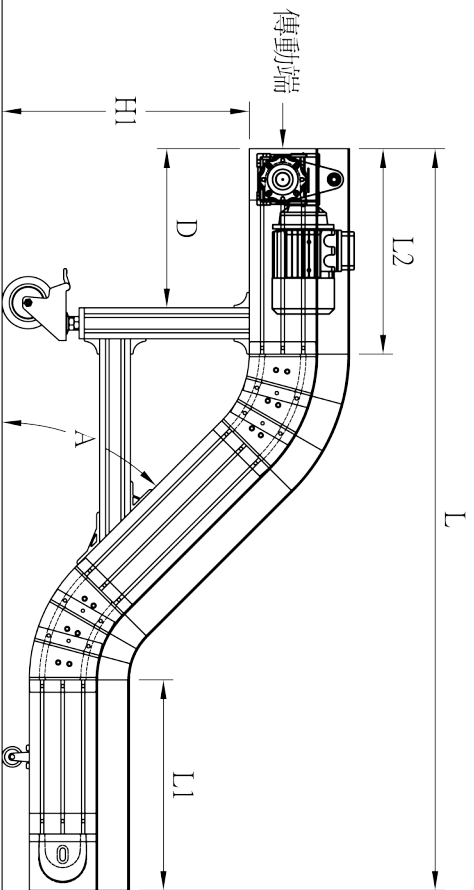


MAN-300



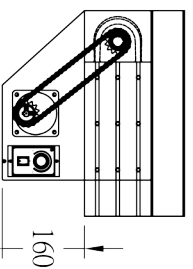
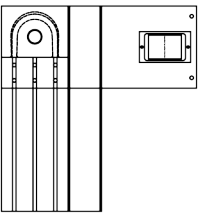
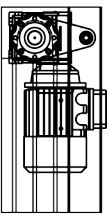
標準型

加高型

(加高護欄兩側可互換)

馬達型式：

- a. 三相馬達 (側邊型)
- b. 單相馬達 (上置型)
- c. 單相馬達 (下置型)



輸送機數量 = _____ 台

長度(L) = _____ mm (L1) = _____ mm (L2) = _____ mm

高度(H) = _____ mm (H1) = _____ mm (H2) = _____ mm

限制距離(D) = _____ mm

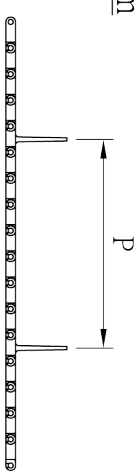
爬坡角度(A) = $\square 15^\circ / \square 30^\circ / \square 45^\circ / \square 60^\circ / \square 75^\circ / \square 90^\circ$

網帶寬度選項(W) = $\square 128 / \square 179 / \square 230 / \square 280 / \square 330 / \square 380 /$

$\square 430 / \square 481 / \square 532 / \square 582$ mm

網帶擋板高度(B) = $\square 25 / \square 50$ mm

擋板間距(P) = _____ mm



馬達型式 = $\square a.$ / $\square b.$ / $\square c.$ ps. 選項b. 請填寫成品通過高度 = _____ mm.


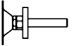
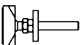
動力 = 三相馬達 = $\square 1/4$ hp / $\square 1/2$ hp / $\square 1$ hp ; 單相馬達 = $\square 60$ W / $\square 90$ W

電壓 = _____ V ; 頻率 = $\square 50$ Hz / $\square 60$ Hz

轉速 = _____ 米 / 分 ; 調速 = \square 是 / \square 否

位置 = \square 右 / \square 左 ps. 面對輸送機傳動端 ; 選項b. 為調速器位置

腳座型式 = $\square 1.$ / $\square 2.$ / $\square 3.$

- 1. 架車輪 
- 2. 圓盤腳座 
- 3. 防滑腳座 



尚吉祥實業有限公司

台南市歸仁區凱旋路一段650號

電話: 06-3308628 傳真: 06-3308178

http://www.sjs.com.tw E-mail: sjs.jeffery@msa.hinet.net